

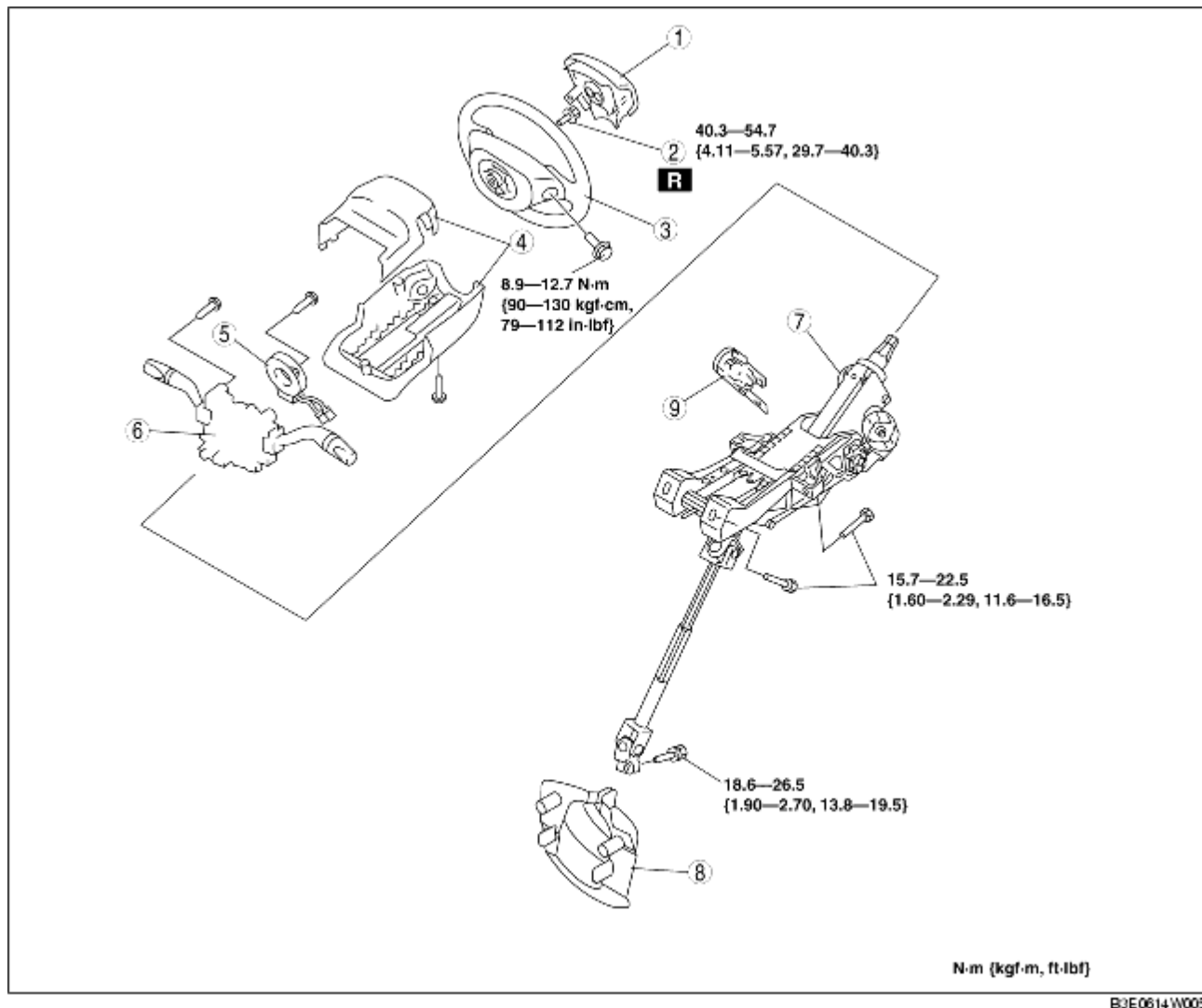
# STEERING WHEEL AND COLUMN REMOVAL/INSTALLATION

B3E061432010W02

## Warning

- Handling the air bag module improperly can accidentally operate (deploy) the air bag module, which may seriously injure you. Read the service warnings before handling the air bag module. (See [SERVICE WARNINGS.](#))

1. Remove in the order indicated in the table.
2. Install in the reverse order of removal.



1	Air bag module (See <a href="#">DRIVER-SIDE AIR BAG MODULE REMOVAL/INSTALLATION.</a> )
2	Lockbolt

3	Steering wheel (See <a href="#">Steering Wheel Removal Note.</a> ) (See <a href="#">Steering Wheel Installation Note.</a> )
4	Column cover
5	Clock spring (See <a href="#">CLOCK SPRING REMOVAL/INSTALLATION.</a> )
6	Combination switch
7	Steering shaft (See <a href="#">Steering Shaft Installation Note.</a> )
8	Dust cover
9	Key cylinder (See <a href="#">Key Cylinder Removal Note.</a> )

## Steering Wheel Removal Note

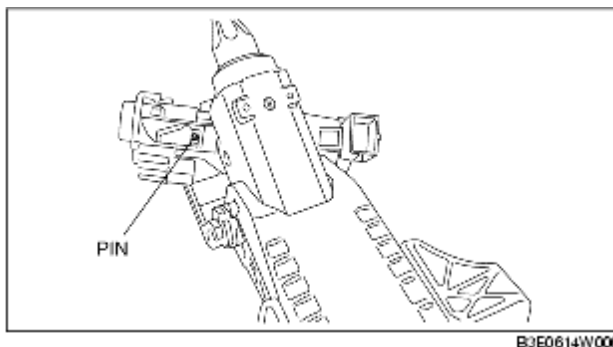
### Caution

- Do not try to remove the steering wheel by hitting the shaft with a hammer. The column will be damaged.

1. Set the wheels in the straight-ahead position.
2. Remove the steering wheel using any commercially available puller.

## Key Cylinder Removal Note

1. Turn the key to the ACC position.
2. Push the pin and remove the key cylinder.



## Steering Shaft Installation Note

1. Verify that the tilt lever is in the LOCK position.
2. Tighten the bolts in alphabetical order.

## **Steering Wheel Installation Note**

1. Set the wheels in the straight-ahead position and install the steering wheel.